



Improvements in Version 6.2

Project Beagle [Bald Eagle] –

– the project name for the next groundbreaking d.3 generation developed to meet the requirements of tomorrow's business processes.

d.3 Version 6.2 is the next step to a further refinement of the approved d.3 archiving, DMS and workflow functionalities. In addition to established Web services, version 6.2 comprises the new d.3 workflow designer, an additional central component of a service-oriented product architecture (SOA).

In addition to the new workflow designer, d.3 version 6.2 provides interesting improvements such as an extended authorization concept which expands the term "object", or decided reporting options.



d.3 Version 6.2 is the next step to further granulation of the approved d.3 archiving, DMS and workflow functionalities – on the way to a service-oriented product architecture.

Workflow Design

Digital control of simple business workflows has been finding its way into companies and institutions. Due to the satisfying results, even more complex workflows are to be reflected in rule-based workflow scenarios. The complexity of

single steps hampers the design of these scenarios and their integration into corporate processes.

With the new Java-based d.3 flow designer, graphic designing of complex, multi-layer business processes becomes quite convenient. Just select the required workflow steps from the integrated library of components and connect them, and you will have established the basis even for complex scenarios.

With the new d.3 flow designer, workflow scenarios are designed on the basis of the Business Process Modeling Notation (see box). The completely designed workflows are transferred to the executable workflow code according to the standard of the Business Process Executing Language (see box). In this way, digital processes designed by means of d.3 flow can be easily integrated into existing structures.

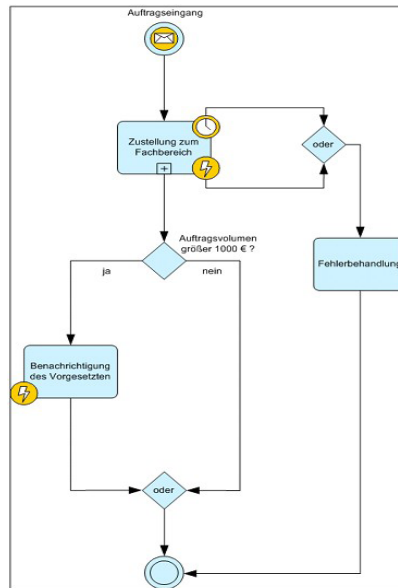


Fig. 1 Workflow design with d.3 flow designer

Workflow Presentation

Verifying and deciding – these are the tasks of anyone involved in a business process once they open the input mask. The more precise the accompanying in-

Extensions of Version 6.2



formation and selection options about the workflow step are, the faster and easier the processing is.

The new d.3 flow, developed completely in Java, creates a new path for displaying single workflow steps to the user. Workflow interfaces are no longer generated by the d.3 explorer but centrally by the d.3 server component: the Workflow Presentation Server.

BPMN — Business Process Modeling Notation

International description standard used for designing workflows. Workflows designed by means of this standard can be displayed and edited by every workflow product that is able to process BPMN.

BPEL - Business Process Executing Language

International description standard for the purpose of executing workflow steps. Workflow steps generated by means of this standard can be executed by every workflow engine capable of BPEL.

Depending on the individual workflow steps, a mask is generated which contains only the required information. This is displayed to the user at run time. This new technology allows d.3 users to have the interfaces for editing displayed in their familiar application, e.g. in an ERP system, Outlook or Notes, etc. In order to edit single workflow steps, there is no need to switch to the d.3 system.

The new d.3 flow provides brand-new possibilities to design workflow masks. Masks are assembled using drag & drop elements, content is integrated via Web services or dynamic tables are generated.

Because the development of d.3 flow was based completely on Java, tag libraries from the large Java world can be used. Because of this, more options are available for the design of dynamic d.3 workflow masks.

Design the new — maintain the proven

Proven d.3 workflow structures do not need to be abandoned with the new d.3 flow. Existing workflow scenarios can be edited and extended by means of the d.3 flow designer. The present d.3 technology will execute these workflows as usual.

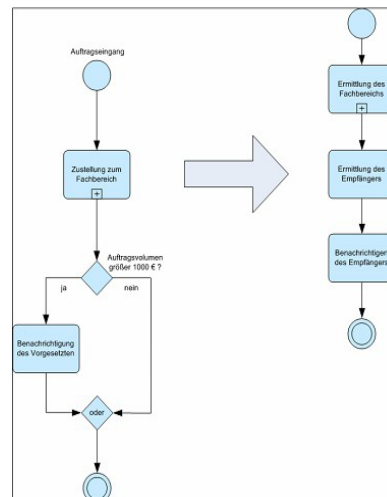


Fig. 2: Different views at workflows

Multilingualism

The ability to apply d.3 between different countries is further expanded by the new version 6.2. Thus, data records of attributes in an archive can now also be in different languages, e.g. Russian and German.

Attributes can be entered both in Cyrillic and in German fonts into the same archive. All users can thus search for information in their own language in the common system.

Extensions of Version 6.2



d.velop

Reporting

Do you need statistic reports about what happens in the d.3 system or in the d.3 workflows? What once took a lot of manual effort is now quite simple.

With d.3 reports, you will generate your reports on the basis of the information available in your d.3 system quickly and easily.



Smooth Windows Integration

Writing letters, using the “Save as” Windows function and selecting directories – this is the easy way of archiving in a revision-proof way with d.3 version 6.2. Or you search for documents contained in the archive by searching in your directory structure as you are used to doing.

With the smooth Windows integration, your d.3 turns out to be your familiar explorer tree. Work in your familiar application and do not worry about managing your documents – d.3 does the work for you in the background.

To do this, d.3 plunges into the Microsoft Windows world and enhances the Windows Explorer directories with d.3 functionalities to manage and

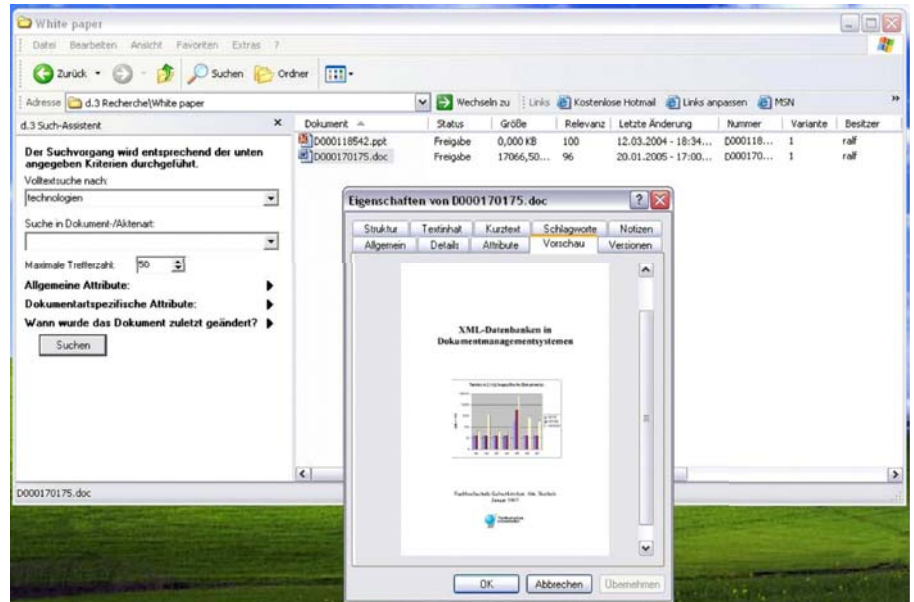


Fig.3: Integration into Windows Explorer: d.3 information and document preview in the file properties

archive documents. In this way, documents are, for instance, attributed via the directory structure. Thus, the d.3 system can be searched completely autonomously.

All d.3 information on the documents archived in the system is displayed in the file features. (Fig. 3) This includes details on all versions of the respective document contained in the d.3 system as well as a preview of the released document.

Still want to research information using the d.3 explorer? Your familiar folder structure is at your disposal and you will feel at home without additional training. (Fig. 4)



Extensions of Version 6.2



d.velop

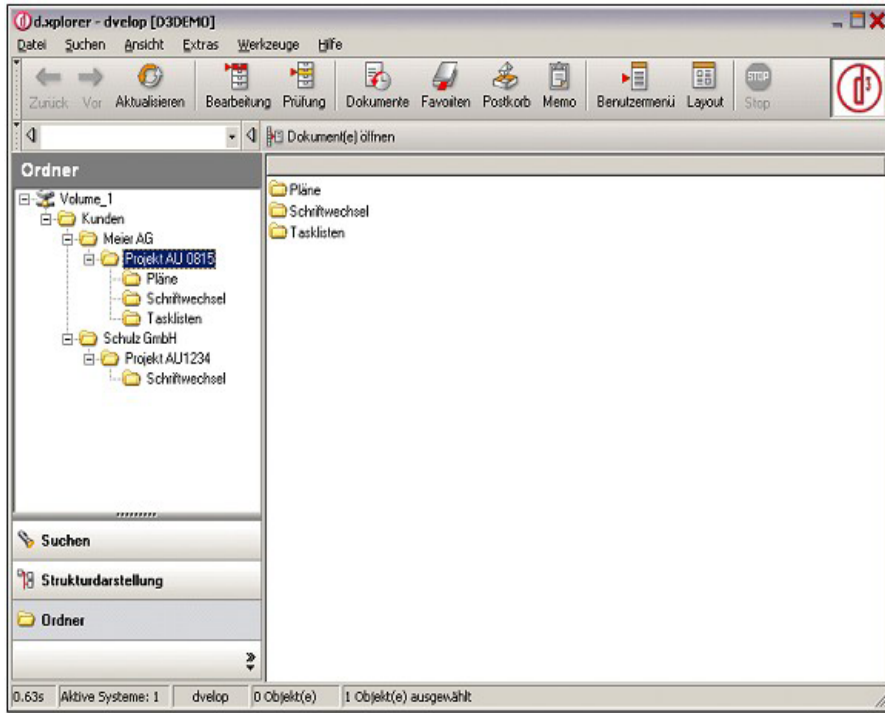


Fig.4: Windows folder structure in the d.3 explorer

ministrator is facilitated. The term “object classes”, which was restricted to documents so far, is extended to in-boxes, value sets etc. Thus, the concept of authorization for persons and groups is also integrated.

d.3 administrators will be pleased about the ability to define sub-administrators. Skilled professional users who are sub-administrators are allowed to modify d.3 objects such as value sets – without the need to take a hand in the entire d.3 administration. That way, everyday occurrences arising from applying d.3 can be delegated.



Authorization Concept

Who is permitted to do what? And to which documents does he or she have access? An authorization concept that can be fine-tuned is essential in order to grant authorized persons access to information released to them depending on the hierarchical level.

From version 6.2 on, d.3 uses an authorization concept based upon classes and roles. In this way, the work of the d.3 ad-

Extensions of Version 6.2

Contact

Do you still have questions?
Please do not hesitate to contact us:

d.velop AG
digital business solutions

Schildarpstraße 6–8
GER-48712 Gescher

Fon: +49 (0) 2542 – 9307-0
Fax: +49 (0) 2542 – 9307-20

E-Mail: info@d-velop.de



d.velop