



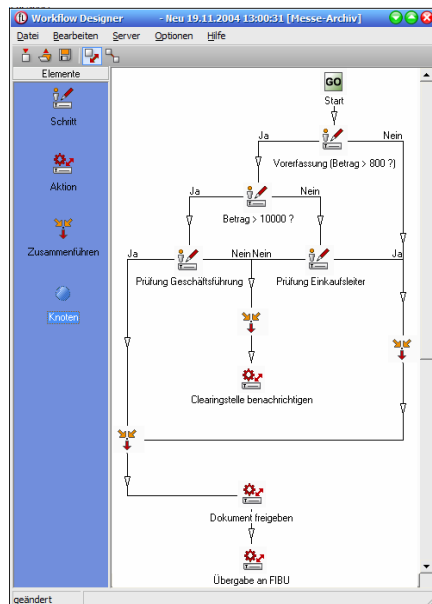
High performance modelling and illustration of business processes within the d.3 system

d.3 flow is an integrated rule-based workflow component, which helps you to adapt standardised and frequently repeating business processes individually on your organisation and so increase the productivity of your co-workers clearly.

In sense of the d.velop product philosophy thereby the workflow module becomes an integral component of the entire d.3 system and a concern for the quality and compatibility of various interfaces is void. Unlike most other product families in the market, where the areas archiving, DMS and workflow are being regarded separate systems, d.3 offers a total conception for these (sub -) areas of an Enterprise Content Management System. Thus d.3 avoids the problem to have to check out documents from existing archives first, hand them over to the workflow application and after run of the complete process, check them in again.

d.3 keeps full control of the document during the entire process cycle and the entire automated controlling of the document flow inserts itself smoothly into

d.3 flow is an integrated rule-based workflow component, which helps you to adapt standardised and frequently repeating business processes individually on your organisation and so increase the productivity of your co-workers clearly.



Ill. 1: Processes can be graphically put on over the d.3 flow_designer.

the usual d.3 environment. The whole

workflow is put down as XML file to the respective document class in the d.3 archives.

Design of business processes with d.3 flow designer

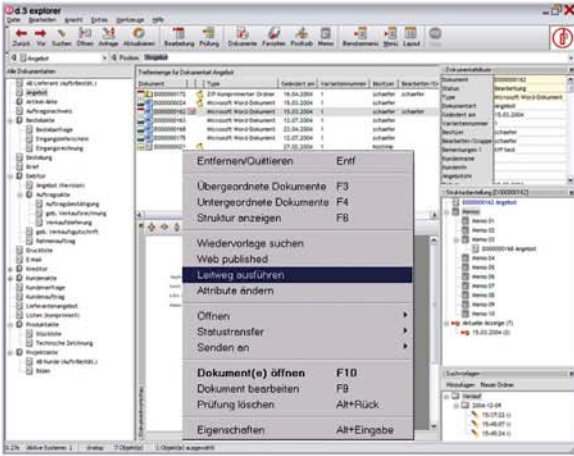
The graphic workflow designer makes the comfortable modelling of business processes with graphic objects possible. Selfprovided HTML forms can be merged into workflow. The finished modelled workflows can be handed over directly to the d.3 server.

In a tightly defined Workflow - documents having been conducted to different places in the enterprise rule based, actions being executed automatically in a case distinctions passed - of course the possibility also must be given "to break out" of this rigid, predefined Workflow and to send the document into an ad hoc Workflow.

d.3 flow



d.velop

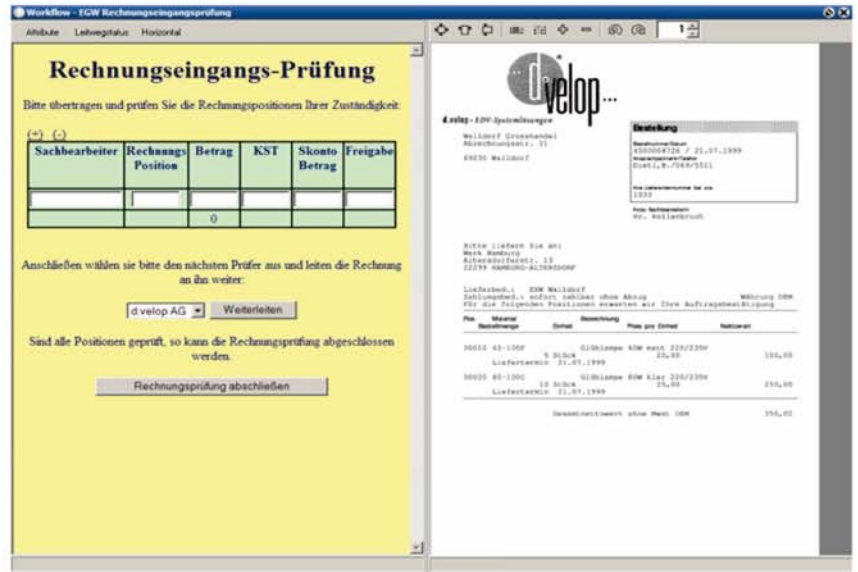


Ill. 2: By d.3 explorer documents can be sent also manually into a routing.

A document can be taken out at any time of the defined workflow and be sent ad hoc at certain users or groups.

Likewise every archived document in d.3 could be sent into a routing from the d.3 explorer manually. Mouse-click been sufficient and the workflow is started with the menu option "Start routing". If a document already is in a routing, the point "routing status" is indicated, with which you can inform yourself, where the document is in the routing.

If the d.3 user receives a document in the re-submission for decision, he can select start routing in the context menu to switch over into the HTML mask to send the document to the next step of the routing.



Ill. 3: In a HTML mask the processing status can be set.

d.3 flow

Contatto

icedata

Icedata S.r.l.
Via Liano, 3720
40024 Castel S. Pietro T.
Bologna (Italy)

Tel. +39 51 944566
Fax +39 51 944720
icedata@icedata.it
http://www.icedata.it



d.velop